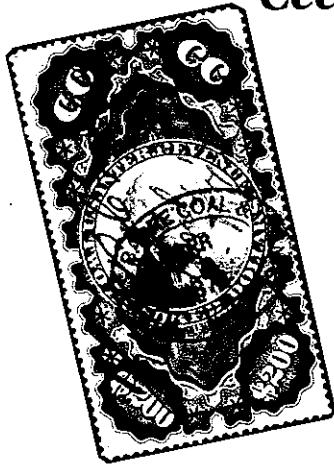


Cee-Jay Stamp Sales Inc.



Cee-Jay Stamp Auctions Inc.

Chesapeake Mail Sales



Three ways to serve you: full service store, public auctions and mail bid sales. Whether you are an advanced collector searching for the elusive or a beginner filling your first album, Cee-Jay is here to help in your endeavor providing friendly and courteous service. We offer one of the most extensive inventories in the area and a wide range of services including private treaty sales, auctions, mail sales and a full service store including supplies and philatelic literature.

Cee-Jay Stamp Auctions Inc. & Chesapeake Mail Sales...

This year alone we will offer over 25,000 public auction and mail-bid lots. About 8000 lots will be sold at public auction including many specialized areas and 17,000 lots via our mail-bid sales.

You can bid with confidence...

Knowing that everything you buy is backed by the Cee-Jay reputation for quality and satisfaction. Our auction catalogs are accurate and attractive with carefully-written descriptions and a lavish use of illustrations. If you read our catalogs or participate in our sales, you will know that we take the time to breakdown holdings to a fine degree, much further than other auction houses, resulting in our offering a wide array of material.

Don't miss out...

Return the coupon below for your free catalog. Catalogs are sent free of charge to active buyers.



Please send Cee-Jay Public Auction Catalog.

Please send Chesapeake Mail Sales Catalog.

CJ

Name _____

Address _____

City, State _____ Zip _____

Phone Number _____

Cee-Jay Stamp Sales Inc., 100 N. Washington St. #202, Falls Church, VA 22046 (703) 237-1222

HE
6191
N108
1989
NPM

ster President



Your Highness the President
of the United States of
America-Preferred by
John Adams
Your Elective Majesty . . .
Your Highness the
President . . .
Your Excellency . . .
and the arguments continued
in that First Congress--
What to call our elected
President !!!

1789-1989

Commemorating the 200th anniversary of the
inauguration of George Washington in 1789

our first elected *Mister President*

INAPEX

National Philatelic Exhibitions of Washington, D.C.
June 2, 3, 4, 1989 Sheraton National Hotel, Arlington, VA



**The NAPEX 89 RECEPTION & INFORMATION DESK
is located in the EXHIBITION LOBBY and has for sale:**

NAPEX 89 official PROGRAM/CATALOG, unserviced -----	\$.50
Serviced with NAPEX SHOW CANCEL for opening day -----	1.50
Serviced with NAPEX SHOW CANCEL, one for each day (set of three) -----	3.50
NAPEX 89 official CACHET, unserviced (any one of three colors) -----	.50
Unserviced, set of three (one red, one blue and one silver grey) -----	1.00
Serviced with NAPEX SHOW CANCEL on opening day -----	1.50
Serviced with NAPEX SHOW CANCEL (set of 3, one for each show day) -----	3.00
NAPEX 89 <i>Souvenir Card Number 3</i> , unserviced (mint)-----	2.00
Serviced with NAPEX SHOW CANCEL on opening day -----	3.00

NAPEX AWARDS BANQUET will be held in the Sheraton National Hotel Concourse Room on Saturday, June 3, 1989, at 7:30 pm. Those attending the banquet will receive a special keepsake produced in a very limited edition. A social hour (open bar--Dutch treat) will be held in the Concourse Room at 6:30 pm prior to the Banquet. Tickets for the Banquet are \$25 per person.

MAIL ORDERS for all the above items except the Banquet keepsake will be accepted until supplies are exhausted by mailing the request to NAPEX, P.O. BOX 4510, Arlington, Virginia 22204-0510.

PRESIDENT'S WELCOMING MESSAGE

June 2, 1989

Dear Visitors:

NAPEX this year again is held in the beautiful Sheraton-National Hotel situated at the confluence of Washington Boulevard and Columbia Pike in Arlington, Virginia. Arlington is part of Metropolitan Washington, and until 1846 was part of the District of Columbia.

A very special welcome is extended to the President of the American Airmail Society, Stephen Reinhard, and to all the officers and members of that fine organization which this year is holding its annual convention in the Nation's Capital. Special philatelic greetings are also extended to the many other societies which are holding regional meetings or having special programs at NAPEX including the U.S. Philatelic Classics Society, the American Topical Association and its Americana Unit, the Korean Stamp Society, the China Stamp Society, the International Society of Japanese Philately, the Philippine Study Group, the American First Day Cover Society, the Eire Philatelic Association, the Lions International, the East Africa Study Circle, the Liberian Stamp Society, the Turkey and Ottoman Stamp Society, the Scandinavian Stamp Society, the American Association of Philatelic Exhibitors, the Virginia Topical Society and several other philatelic organizations.

This year NAPEX is offering the third in a series of souvenir cards honoring the 200th anniversary of the inauguration of George Washington, our first president, 1789-1989. Other cards will be issued in succeeding years in a numbered, limited series.

In addition, all visitors are invited to attend the large NAPEX auction on Saturday, June 3, handled by CEE-JAY STAMP AUCTIONS, INC., the largest auction firm in the Washington metropolitan area.

The month of June in Washington is a really beautiful time of the year and the members of the NAPEX organization hope all our visitors will take time to see the many sights of our Nation's Capital.

Philatelically yours,

Milton Mitchell
Milton Mitchell
NAPEX President



AUCTION GIFT TO SIL 08-98

The National Philatelic Exhibitions of
Washington,
D.C.



NAPEX
1989

HE
6191
N108
1989
NPM

OFFICERS

MILTON MITCHELL President
GORDON TORREY Vice-President
GERHARD S. WOLFF Treasurer
GEORGE S. MANSFIELD Secretary
L. W. (Bill) DRAEGER Director
PATRICIA KAUFMANN Director
DOUGLAS K. LEHMANN Director
RALPH SIGLER Director
SEYMOUR B. STISS Director
JOHN R. WEIMER Alternate Director

COMMITTEES

General Chairman Milton Mitchell
Advertising Patricia Kaufmann
Banquet & Social Coordinator Marion Mitchell
Exhibit Entries & Awards Gordon H. Torrey
Exhibit Mounting Gary Paiste
Finance Gerhard S. Wolff
Floor Manager & Security. Ralph Sigler
Judges Milton Mitchell
Jury Secretary Seymour B. Stiss
Typography & Design L. W. (Bill) Draeger
Program Coordinator George S. Mansfield
Publicity Douglas K. Lehmann
Sales John R. Weimer

☆ **JUDGES**

Chairman of the Jury: Henry Hahn, Fairfax, VA
Jury Members: C. W. Christian, Laguna Hills, CA
Louise Van Ingen, Placentia, CA
James R. Adams, Indianapolis,
R. Malcolm Hooper, East Hartford, CT
Apprentices: Robert E. Lana, Narberth, PA
Earl H. Galitz, Miami, FL

NAPEX MEMBERSHIP

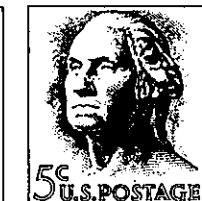
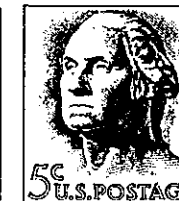
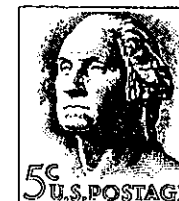
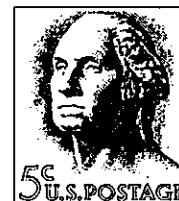
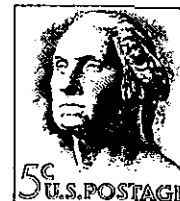
The National Philatelic Exhibitions
of Washington, D.C., Incorporated

Effective January 1983, annual NAPEX dues were established at \$2.00. Membership — as individual or club — is available at the NAPEX Office, or contact any NAPEX officer or director. Life membership is available at \$25.



MEMBER CLUBS

American First Day Cover Society--R. C. Graebner Chapter 17
American Society of Polar Philatelists--Iceberg Chapter 3
American Topical Association--Potomac Chapter
Baltimore Philatelic Society
Capital Precancel Club
China Stamp Society--National Capital Junk Chapter
Collectors Club of Baltimore
Collectors Club of Washington
Dolley Madison Stamp Club
George Washington Masonic Stamp Club
International Society for Japanese Philately
Korea Stamp Society--D.C. Area Chapter
Library of Congress Philatelic Club
Rockville-Gaithersburg Stamp Club
Scandinavian Collectors Club--National Capital Area Chapter 12
Silver Spring Philatelic Society
Society of Indo-China Philatelists
Springfield Stamp Club
U.S.C.S.--Admiral Byrd Chapter 11
Washington Philatelic Society



PROGRAM

Friday, June 2, 1989

- 8:30 am **American Air Mail Society** . . .
to
noon The American Air Mail Society is sponsoring two field trips. The first trip is scheduled for 8:30 am until noon on Friday, and will visit the Paul E. Garber Facility in Silver Hill, MD. The Garber Facility is the storage and restoration site of the National Air and Space Museum. The second trip is scheduled for 8:30 am until noon on Saturday and has two stops. The first stop is the NASA Visitor Center at Greenbelt, MD. The second stop is the College Park, MD, Airport which is both the world's oldest and longest continuing operating airport. These two field trips will depart via bus from the front entrance of the Sheraton National Hotel and cost \$15.00 each. Tickets can be purchased at the door and the society has reserved a block of seats for non-members who are most welcome.
- 10:00 am **Opening ceremonies--The cutting of the coil** . . .
Exhibition and Bourse open . . .
- 10:00 am **CEE-JAY Stamp Auction** . . . Viewing for Public
to 7 pm Auction . . . Room Mezzanine Four . . .
- 2:00 pm **American Air Mail Society: Meeting and program**.
to 4 pm
- 7:00 pm **Exhibition and Bourse close** . . .

Saturday, June 3, 1989

- 8:30 am **American Air Mail Society: Bus trip to NASA**
to noon Visitors Center and College Park Airport.
(See Friday's schedule for details.)
- 10:00 am **Exhibition and Bourse Open** . . .
- 10:00 am **CEE-JAY Stamp Auction** . . . Viewing for Public
to 3 pm Auction--Room Mezzanine Four . . .
- 11:00 am **Linn's Stamp News and You: Program by Wayne**
to noon L. Youngblood--Room East One . . .
- 11:00 am **British North American Philatelic Society: Pro-**
to noon gram--Room East Two . . .
- 11:00 am **International Society for Japanese Philately: Pro-**
to 1 pm gram *Japanese Seapost Mail* by Michael
R. Ruggiero--Room Mezzanine Two . . .

Saturday, June 3, 1989--CONTINUED

- 1:00 pm **CEE-JAY Public Auction: Session 1--Room**
to Mezzanine Three . . .
- 2:30 pm
1:00 pm **China Stamp Society: Meeting--Room East**
to 2 pm Two . . .
- 1:00 pm **Liberian Stamp Society: Program *Liberia--Its***
to 2 pm *Stamps and Postal History* by Tom
Richards--Room East One . . .
- 1:00 pm **Canal Zone Study Group: Meeting and program--**
to 2 pm Room Mezzanine Two . . .
- 2:00 pm **American Air Mail Society: Meeting--Room East**
to 4 pm Two . . .
- 2:00 pm **Korean Stamp Society: Meeting--Room East One**.
to 3 pm
- 2:00 pm **East Africa Study Group: Program *Postage***
to 3 pm *Stamps of Zanzibar* by Regis Hoffman--
Room Mezzanine Four . . .
- 3:00 pm **CEE-JAY Public Auction: Session 2--Room Mez-**
to zanine Three . . .
- 4:30 pm
- 3:00 pm **Scandinavian Collectors Club: Program--*The***
to 4 pm *Greenland Bears* --Room Mezzanine Two.
- 3:00 pm **Virginia Topical Society: Meeting and Program--**
to 4 pm Room Mezzanine Four . . .
- 3:00 pm **Eire Philatelic Association: Meeting and Program--**
to 5 pm Room East One . . .
- 4:00 pm **US Philatelic Society: Program *The 1847 US First***
to *Issue Used Abroad* by Richard F. Winter--
5:30 pm Room Mezzanine Four . . .
- 6:00 pm **Exhibition and Bourse close** . . .
- 6:30 pm **NAPEX Dutch Treat Cocktail Party** . . .
- 7:30 pm **NAPEX Awards Banquet** . . .

Sunday, June 4, 1989

- 8:30 am **American Air Mail Society:** Breakfast--Location will be posted on the hotel's closed circuit television screen . . .
- 10:00 am **Exhibition and Bourse open** . . .
- 10:00 am **American Air Mail Society:** Meeting and auction--to noon Location will be posted on the hotel's closed circuit television screen. . .
- 11:00 am **Judges critique:** Room Mezzanine Four . . .
- 1:00 pm **American Association of Philatelic Exhibitors:** Seminar led by John Hotchner . . .
- 2:00 pm **Philippine Study Group:** Meeting and Program--to 4 pm Room Mezzanine Two . . .
- 4:00 pm **Exhibition and Bourse Close** . . .

National Exhibition  **Champion of Champions**

The **NAPEX** annual stamp exhibition is a *National* show. The *Grand Award winner* is invited to participate in the *Champion of Champions* yearly competition held by the *American Philatelic Society (APS)*.

In order to qualify for the *Champion of Champions* competition, a local exhibition must have at least 2,000 pages of material in competition to be judged by APS accredited judges, and there must be a critique held by the judges after the awards have been made to which all exhibitors (and others) are invited to attend. These critiques are intended to be helpful and informative: questions will be answered.

A W A R D S



**NAPEX Grand Award
and
NAPEX Reserve Grand Award**

Gold, Vermeil, Silver, Silver-bronze and Bronze medals will be awarded on an Open Show basis, without regard to classification or the various society awards.

AMERICAN PHILATELIC SOCIETY
APS Medals of Excellence
a. Pre-1900
b. 1900-1940
c. 1940 to present
APS Medal for Research

BUREAU ISSUES ASSOCIATION
Statue of Freedom Award

U.S. CANCELLATION CLUB AWARD

AMERICAN TOPICAL ASSOCIATION
Gold, Silver and Bronze Medals

U.S. PHILATELIC CLASSIC SOCIETY MEDAL

BRITISH NORTH AMERICA AWARD

AMERICAN FIRST DAY COVER SOCIETY AWARD

TURKEY and OTTOMAN PHILATELIC SOCIETY AWARD

AMERICAN AIR MAIL SOCIETY MEDAL

POSTAL HISTORY SOCIETY MEDAL

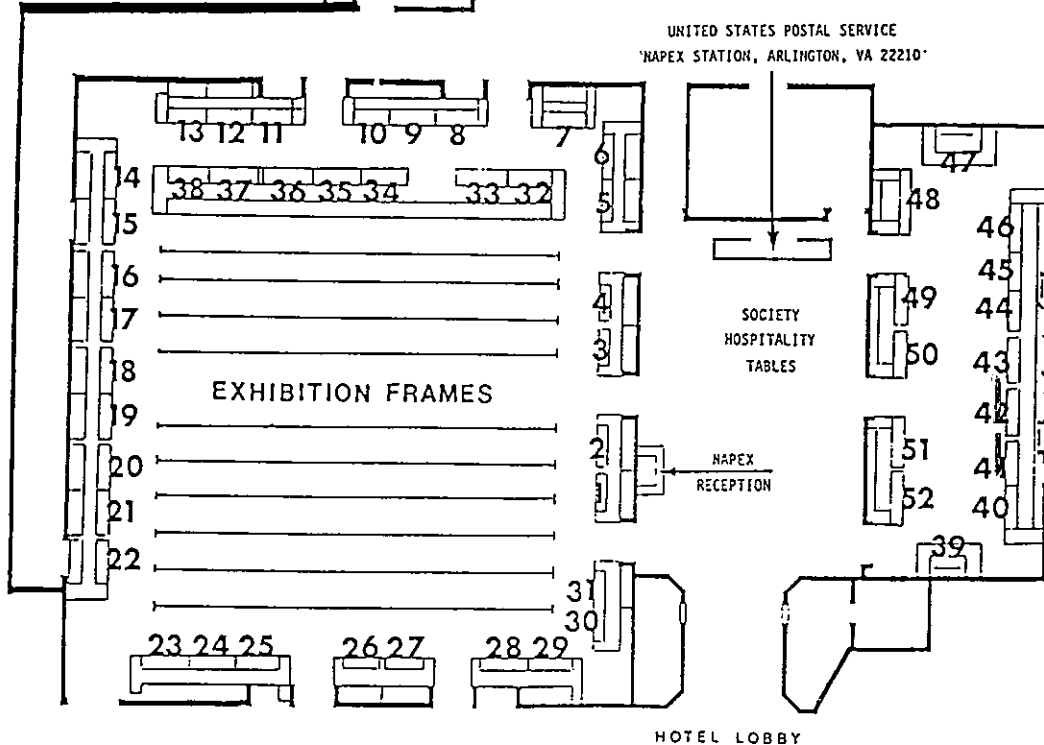
MICHAEL ROGERS BEST ASIA AWARD

SCANDINAVIAN COLLECTORS CLUB

AMERICAN ASSOCIATION OF PHILATELIC EXHIBITORS PINS

NAPEX 89

SHERATON NATIONAL HOTEL, Columbia Pike & Washington Boulevard, Arlington, Virginia



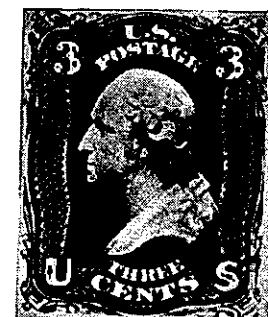
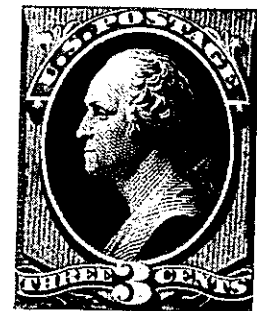
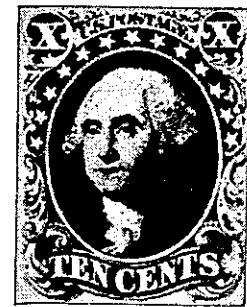
The BOURSE • Booth holders at NAPEX 89, June 2, 3 & 4, 1989

- | | |
|--|--|
| 1. CEE-JAY STAMP SALES, INC., Falls Church, VA | 13. H & M COVERS, Bowie, MD |
| 2. ALAN LIPKIN STAMP CO., Petaluna, CA | 14. JOY COVERS & STAMPS, Forestville, MD |
| 3. MOUNTAINSIDE STAMPS, Mountainside, NJ | 15. GOTHIC COVERS, Akron, OH |
| 4. LABRON HARRIS, Glen Echo, MD | 16. JOHN B. WHALEN, Crofton, MD |
| 5. GORDON McHENRY, INC., Osprey, FL | 17. THE CLASSIC COLLECTOR, Ottawa, Canada |
| 6. VICTORIA STAMP CO., Ridgewood, NJ | 18. CHRISTIE'S, New York, NY |
| 7. SCOJO STAMPS, Ridgely, MD | 19. A. H. COINS & STAMPS, Virginia Beach, VA |
| 8. MICHAEL ROGERS, INC., Winter Park, FL | 20. SAFE PUBLICATIONS, INC., Southampton, PA |
| 9. ROCKVILLE STAMP & COIN, Rockville, NY | 21. DEAN STAMPS, Newark, OH |
| 10. MARYLAND STAMP & COINS, INC., Bethesda, MD | 22. BROWSE HOUSE, Holly Hill, FL |
| 11. RICHARD B. LEWIS, Glenside, PA | 23. BUD ELVGREN, St. Paul, MN |
| 12. RIGASTAMPS, Eaton, OH | 24. WARD D. MORTON, Summerfield, FL |

Plan now for NAPEX 90

Booth holders at NAPEX 89, June 2, 3 & 4, 1989

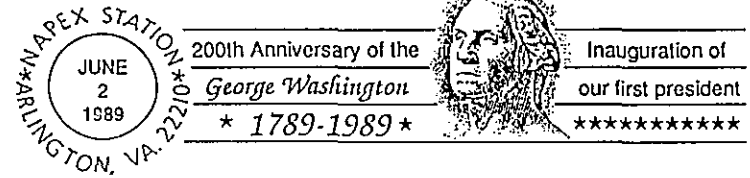
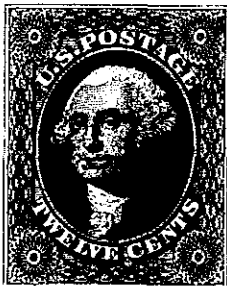
- 25. A. & H. STAMPS, Bloomington, MN
- 26-27. SHULL SERVICE, Crofton, MD
- 28. ERIC JACKSON, Leesport, PA
- 29. THE EMPIRE GROUP, West Lawn, PA
- 30. RICHARD A. CHAMPAGNE, LTD, Newton, MA
- 31. HARRIS & HARRIS, Baltimore, MD
- 32-33. STEWART R. KUSINITZ, Fall River, MA
- 34. PRINCETON PHILATELICS, Tappan, NY
- 35. GALLEON PHILATELICS, Gloucester, VA
- 36. JEFF-MAR ASSOCIATES, East Setauket, NY
- 37. PHILATELICS UNLIMITED, McLean, VA
- 38. NEW ENGLAND NORTH, Waban, MA
- 39. POSTAL HISTORY INTERNATIONAL, Lawton, OK
- 40. GAREL INDUSTRIES, INC., Hewlett, NY
- 41-42. STAMPS WITH TEETH, Silver Spring, MD
- 43. WESLEY A. CROZIER, Fairhaven, NJ
- 44. EASTERN SHORE STAMP CO., Fruitland, MD
- 45. SCOTT MICHAEL STAMPS, Randallstown, MD
- 46-47. SUBWAY STAMP SHOP, New York, NY
- 48. MILLS PHILATELICS, Goshen, NY
- 49. LEBANON STAMP SHOP, Lebanon, PA
- 50. RICARDO DEL CAMPO, Miami, FL
- 51. JOHN CHOVAN, Camden, DE
- 52. GLOBAL PHILATELICS, Nashville, TN



NAPEX 90 will be held in this same Sheraton National Hotel June 1, 2 and 3, 1990

INDEX OF EXHIBITORS

ANGERINE, David W.	101-104	LEHMANN, Douglass	72-80
BERECY, Victor G.	261-270	LIPSNER, Benjamin	1-10
BOYLE, Thomas H.	254-260	LYON, John W.	195-198
BUSSEY, Lewis E.	105-109		
COOLEY, Robert J.	44-51	MADDEN, Henry B.	110-118
ELIASHAR, ODED	241-245	MAGID, Paul	271-277
FEIBUSCH, Martin H.	30-25, 226-230	MANSFIELD, George	60
GREEN, Richard	284-288	MAYO, Menachim	119-128
GRIFFITH, Gary	21-29	McCARTY, Phil	213-220
HANEY, Susanne	306-312	MILLER, Robert S. Sr.	188-194
HARRISON, Horace W.	91-96	MITCHELL, Milton	11-20
HEIFETY, Murray	155-160	MOORE, Vernon C.	297-299
HOFFMAN, Regis M.	141-145		
HOOD, Sylvia C.	221-225	RICHARDS, Thomas J.	134-138
IBER, Peter K.	129-133	SCHMIDT, Greg	181-187
JONES, A.D.	161-167, 176-180	SMITH, Thomas W.	209-212
KAUFMANN, Gerhardt	278-283	SPOONER, R.B.	168-175
KLIMLEY, Ronald J.	97-100	STONE, Harlan F.	52-59
KOBERSTEEN, Kent J.	199-208		
KOCHEISEN, Joseph	81-90	TAYLOR, Thomas O.	36-40
KUTZ, Ken	289-296	TRUDELL, John N.	65-71
LAWRENCE, Frederick P.	300-305	WALTERS, P.A.	146-154
		WEIMER, John R.	41-43
		WELCH, Bill	61-64
		WOLFF, Gerhard S.	231-240
		YOUNG, Albert W.	246-253
		ZONAY, Jeanne H.	139-140



EXHIBITS 1989

- 1-10 **Flying the Mails**
Benjamin Lipsner's Personal Collection. He was the first Superintendent of the Airmail Service, U.S. Post Office.
Courtesy of the U.S. Postage Stamp Collection, The Smithsonian Institution (non-competitive).
- 11-20 **The Three Cent Stamp of 1861-67**
Milton Mitchell (non-competitive).
- 21-29 **"One Stamp": The 2¢ Washington 1922**
A demonstration collection of one common stamp, showing the possibilities of specializing.
Gary Griffith
- 30-35 **Tipex: The Third U.S. International Exhibition**
Printing varieties of the souvenir sheet; postal, Exhibition, commercial usages (official and unofficial), cacheted First Day covers.
Martin H. Feibusch
- 36-40 **Georgetown on the Potomac**
Postal markings — 1790-1850.
Thomas O. Taylor
- 41-43 **American Military Mail of World War II V-Mail**
In June, 1942 the U.S. instituted a product of microphotographing military mail to and from overseas personnel by airmail.
John R. Weimer
- 44-51 **Great Britain Line Engraved**
The one penny and the two pence, including the plate number issue.
Robert J. Cooley
- 52-59 **Switzerland's Postal Wrappers: 1871-1959**
Varieties, supplemental adhesives and printed-to-private order examples.
Harlan F. Stone
- 60 **New Zealand Christmas Flights of 1931**
Special flights made for the delivery of Christmas greetings.
George S. Mansfield

- 61-64 **Birth of a Seebeck: El-Salvador 1895**
Essays, proofs and use of the 1895 Seebeck issues.
Bill Welch
- 65-71 **Guatemala Railroad Travelling Agents (Ambulante) Cancellations**
Railroad travelling postal agency cancellations on covers, with notations.
John N. Trudell
- 72-80 **Fiscal Stamps of the Philippine Islands**
Illustrative types and uses for all American and Japanese dominions: 1898-1946.
Douglas Lehmann
- 81-90 **Schleswig-Holstein**
Stampless, fieldpost, Danish, Schleswig-Holstein covers from 1615; as well as stamps with cancellations from most post offices and agencies.
Joseph Kocheisen
- 91-96 **Canada's Registration Stamps: 1875-1893**
Research into the production of these special service stamps; plates, perforations, colors.
Horace W. Harrison
- 97-100 **Mexico's Exporta Definitives: 1975-1989**
A study of the current series, including color varieties.
Ronald J. Klimley
- 101-104 **The Story of Norway's Posthorns**
Arranged chronologically with appropriate text.
David W. Angevine
- 105-109 **French Naval Mail to America World War II**
Covers posted to America from French Warships and bases 1943-1946, showing posting and censoring.
Lewis E. Bussey
- 110-118 **Papel Sellado of Spanish Colonial Quito, 1640-1822**
Henry B. Madden
- 119-128 **Cilicia**
Postal history to show various postal administrations and services to this small area in Asia Minor. From early Ottoman, with a mix of Russian, Austrian, British, French, and return to Turkish.
Menachim Mayo
- 129-133 **Revenue Stamps of Thailand**
Early essays, agriculture tax, court fees, military charity, documentary, match, entertainment, and beast of burden proofs and documents.
Peter K. Iber
- 134-138 **Liberia**
Stamps and postal history.
Thomas J. Richards
- 139-140 **Stained Glass**
A colorful exhibit of stained glass around the world and history of the art.
Jeanne H. Zonay
- 141-145 **Allied Forces in East Africa — World War I**
A survey of the postal history of the campaigns, including Field Post Offices, censored, and occupation covers.
Regis M. Hoffman
- 146-154 **United States Government Flights**
Airmail covers which reflect the rates, postal markings, first flight events of the government flight era: 1918-1921.
P.A. Walters
- 155-160 **Airlines**
A history of commercial airline services from earliest conception to the supersonic Jet age.
Murray Heifetz
- 161-167 **United States Airmail: The Early Years**
From the 1911-1916 Pioneer period to the first return flight of the airship Hindenburg from the U.S. to Germany in 1936.
A.D. Jones
- 168-175 **The Lindbergh Phenomenon**
Airmail routes he flew in the U.S. and Caribbean; surveys and official flights through 1931. His reception after the Paris flight.
R.B. Spooner
- 176-180 **"Without Expense to the Department"**
Airmail sanctioned by the U.S. Post Office Department to be flown prior to the inauguration of regular scheduled services.
A.D. Jones
- 181-187 **Pan Am Pacific Flights, 1935-1941**
The development of air postal routes and passenger service to the Pacific area.
Greg Schmidt
- 188-194 **Pan Am on the Atlantic**
Traces Pan Am's operation starting with Bermuda; includes surveys, U.S.-France, U.S.-U.K., U.S.-Africa.
Robert S. Miller, Sr.
- 195-198 **The Development of Jet Commercial Service for the United States**
A survey of Jet flights from 1946 to the present.
John W. Lyon
- 199-208 **The Beacon Air Mail Stamp of 1928**
Production and usage.
Kent J. Kobersteen

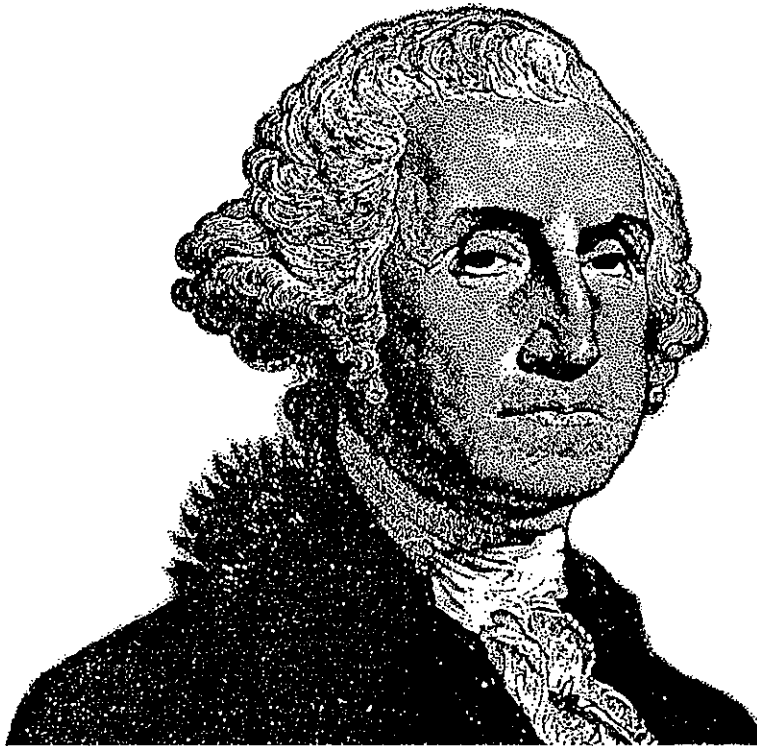
- 209-212 **Experimental Airmail Pick-up Routes**
Covers from each of the pick-up points on contract airmail routes 1001-1002 — a 1939 experimental non-stop pick-up and delivery system.
Thomas W. Smith
- 213-220 **Interrupted Airmail Flights**
An effort to speed up delivery of mail; air transportation was not without mishaps.
Phil McCarty
- 221-225 **U.S. Airmail**
Sylvia C. Hood
- 226-230 **First North America Hindenburg Flight**
Postmarks and cancels on covers dispatched from and to various countries, on board cancels, round trips, TIPEX combinations.
Martin H. Feibusch
- 231-240 **Zeppelin**
Zeppelin stamps and flown mail — the pioneers and the 1930 Europe Pan American flight.
Gerhard S. Wolff
- 241-245 **Pigeon Post of the Great Barrier Island of New Zealand**
Flimsies and stamps, including many "only one" known.
Oded Eliashar
- 246-253 **Development of Air Service — Papua-New Guinea**
The early airmail service into, within, and from these territories.
Albert W. Young
- 254-260 **Airmail Carried by Seaplanes and Flying Boats, 1912-1936**
A worldwide representation of airmail covers carried by aircraft.
Thomas H. Boyle
- 261-270 **The Pioneer Period of Hungarian Airmail**
Covers depicting the aeronautical and aerophilatelic history of Hungary to World War II.
Victor G. Berecz
- 271-277 **From Cairo to the Cape — Imperial Airways Service**
Traces the development of the Imperial Airways Africa service, feeder routes and connecting services from 1931 to 1937.
Paul Magid
- 278-283 **Experimental Rocket Mail, 1932-1939**
Mail from these pioneers of space flights before government became officially involved.
Gerhardt Kaufmann
- 284-288 **Airmail to Austria, 1918-1939**
From around the world flown to Austria, or partly flown and addressed to Austria during the period of the First Republic.
Richard Green
- 289-296 **Our Mineral World**
Man's livelihood depends on minerals, fertilizer for food, oil for power, coal for energy, metals for machine transportation, plumbing, etc. Diamonds for beauty. Gold for wealth.
Ken Kutz
- 297-299 **"Now You See It — Now You Don't"**
Stamps with design errors and their later corrected replacements.
Vernon C. Moore
- 300-305 **Scouts on Stamps "Classics"**
A presentation of the three Scouts on stamps "classics" issues: 1900 Cape of Good Hope Mafeking Siege "blueprints," 1918 Czech Scout Post; 1920-1921 Siam "Scout's Fund" overprints.
Frederick P. Lawrence
- 306-312 **The Virgin Mary**
Mary, the Mother of Jesus, her life and role in history.
Susanne Haney



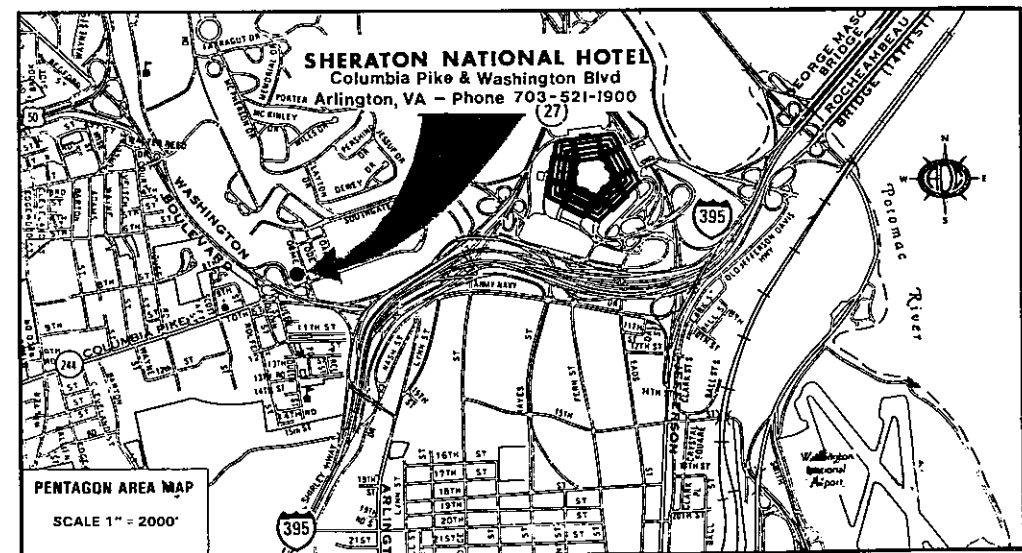
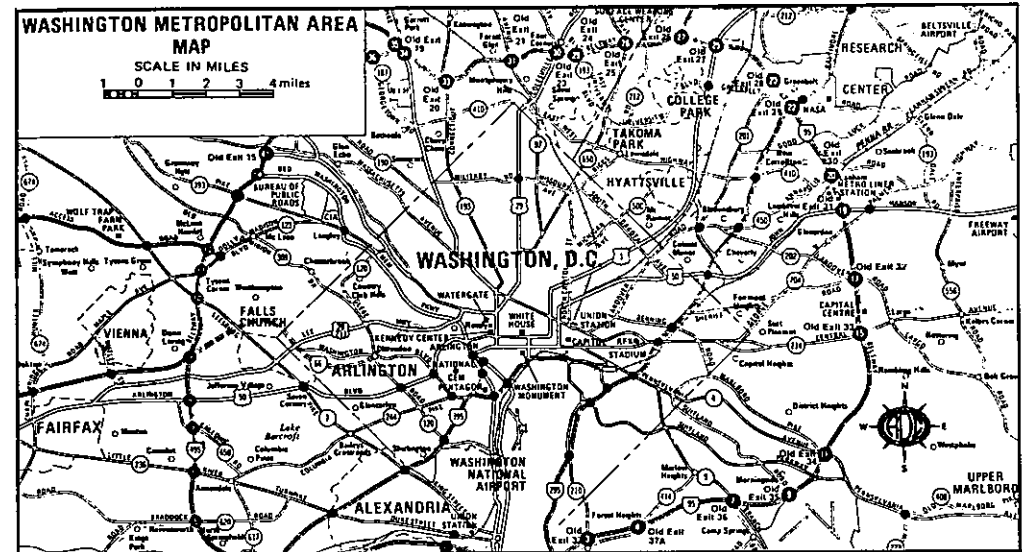
NAPEX 90 + June 1, 2 and 3, 1990

SHERATON NATIONAL HOTEL

Columbia Pike & Washington Blvd., Arlington, VA



Mister President



FROM NORTH:
 TAKE I-95 SOUTH TO I-395 NORTH
 EXIT WASHINGTON BLVD-COLUMBIA PIKE
 (FOLLOW FOOD & LODGING SIGNS)

FROM SOUTH:
 TAKE I-95 NORTH TO I-395 NORTH
 EXIT WASHINGTON BLVD-COLUMBIA PIKE
 (FOLLOW FOOD AND LODGING SIGNS)