

Public Auction #80

June 8, 2003 – 1:00 pm

Sherman Amphitheater – Lower Lobby Level

Highlights



Lot 973
#134* Block of 4
Split "T" grill
Bottom 2 stamps NH
Possibly Unique!
Estimate = \$10,000

1264 Total Lots

USA – 350 lots PLUS covers, flight covers, misc.

CSA – 85 lots including 70 covers

France – 95 lots Germany and States – 150 lots

200+ Collections & Accumulations (including USA)

VIEWING in GUNSTON ROOM:

Show hours plus one hour before and after

COME DOWN AND GET YOUR FREE CATALOG

ALAN BLAIR STAMPS/AUCTIONS

5407 Lakeside Ave., Suite 4

Richmond, VA, 23228

800-689-5602 804-266-3071

e-mail alanblair@prodigy.net



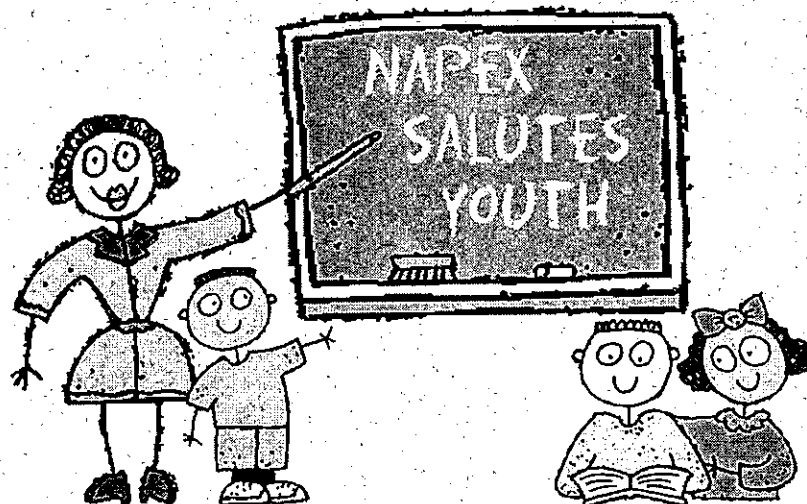
VA A. R. 000627



The National Philatelic Exhibitions of
Washington, D.C., Inc.

★ **NAPEX 2003** ★

Official Program



"We cannot always build the future for our youth,
but we can build our youth for the future."

Franklin D. Roosevelt
(1882 - 1945)

June 6–June 8, 2003 McLean Hilton, Tysons Corner, VA

\$\$\$\$\$\$\$\$\$\$\$\$\$\$\$\$

More and More Dollars

Is What You Want for Your Collection
Look No Further

With our extensive advertising program, our website (www.garyposnerinc.com), and coast-to-coast show schedule, WE NEED YOUR VALUABLE STAMPS, both US and Foreign,

**NOW, MORE THAN EVER -
 AND WE ARE WILLING TO PAY THE PRICE.**

And If You Are Buying

Our Stock has grown tremendously - Come to Booth #37 for great retail and WHOLESALE opportunities!

For Buying or Selling
ONE NUMBER IS ALL YOU NEED:

Booth #37



Gary Posner



Bob Prager



Mike Graska

Gary Posner, Inc.

1407 Ave Z, PMB 535, Brooklyn, NY 11235
 Cell: 917-538-8133, Email: GaryPosnerInc@aol.com
www.GaryPosnerInc.com



800-323-4279

APS
 ASDA NSDA

Table of Contents

| | Page |
|---|-------|
| Welcome, President, NAPEX | 2 |
| NAPEX Board, Show Committee, and Judges | 3 |
| Convening Societies | |
| US Philatelic Classics Society | 4 |
| Postal History Society | 4 |
| Rossica Society of Russian Philately | 5 |
| Carriers and Locals Society | 5 |
| NAPEX 2003 Souvenir Items | 6 |
| Schedule of Events | 7-11 |
| Cachetmakers Bourse | 11 |
| Bourse List | 12-13 |
| FLOOR PLAN | 14-15 |
| Dealer Specialties | 16-18 |
| NAPEX Day at the National Postal Museum | 18 |
| List of Awards | 20 |
| AAPE Awards List | 21 |
| AAPE Youth Champion of Champions List | 21-22 |
| Competitive Exhibit Listing | 22-26 |
| Exhibitor Index | 27 |

Contacting NAPEX

For information write NAPEX at P. O. Box 1312, Falls Church, VA 22041-1312, e-mail at showchairman@napex.org, or visit our website year round at <http://www.napex.org>.

NAPEX 2004

Right here at the McLean Hilton on June 4-6, 2004. Our convening Societies for NAPEX 2004 are:

American Society of Polar Philatelists
 Society of Israel Philatelists

Welcome to NAPEX 2003

Our best advertisement is the collector who was here before – so welcome back! Your attendance at this show makes all of our efforts worthwhile. We work all year to bring to NAPEX (National Philatelic Exhibitions of Washington, DC, Inc.) the best from our past shows and a touch of something new.

During the last two years, we added Docent Tours of Exhibits and a visit by two classes of 4th grade elementary school students. For this, our 30th stamp show, Show Chairman Steve Shupack, and his committee have outdone themselves with many new initiatives. We have our inaugural Cachetmakers Bourse, a Meet the Curator Forum, Technology Seminars, and a Literature Lecture Series. The latter is in preparation for our first Literature Class competition next year at NAPEX 2004.

As our centerpiece, we are very pleased to welcome four major societies who are holding their annual conventions at our show. These societies, together with their varied activities, define this weekend and are listed throughout the program. Be sure to look at their exhibits and visit their tables in the Atrium. We are also sponsoring the AAPE Youth Champion of Champions for the first time. Because of this competition, NAPEX selected a theme saluting youth. This theme is represented by our USPS cancels and show souvenirs. If you are among the members of our participating organizations, this may be your first visit to our show. If so, a hearty welcome and please come back again in future years!

Our show is held under the auspices of the American Philatelic Society as part of their World Series of Philately stamp exhibits. This is our ninth year at the McLean Hilton at Tysons Corner. We hope our efforts, together with those of our participating dealers & agencies, our advertisers, volunteers, and the hotel staff, will result in this area's best philatelic event of the year. We also want to thank Ada M. Prill and the entire AAPE Board of Directors for choosing NAPEX for its youth competition. Enjoy the show!

Douglas K. Lehmann, President

NAPEX Officers and Directors

| | |
|---------------------|----------------|
| Douglas K. Lehmann | President |
| Stephen L. Shupack | Vice-President |
| Nicholas G. Carter | Treasurer |
| Howard H. Schloss | Secretary |
| Darrell Ertzberger | Director |
| Henry Hahn | Director |
| Vincent Knaus | Director |
| Patricia A. Lehmann | Director |
| Thomas Lera | Director |
| Richard Livingston | Director |
| Stephen Luster | Director |
| Paul Magid | Director |
| Charles J. Peterson | Director |
| Norval Rasmussen | Director |
| Donna Joy Sigler | Director |
| Otto J. Thamasett | Director |
| John Warren | Director |
| Gerhard S. Wolff | Director |

NAPEX 2003 Committee

| | |
|---------------------|--|
| Stephen L. Shupack | General Chair |
| Thomas Lera | Deputy Chair and Floor Manager |
| Nicholas G. Carter | Finance, Asst. Technology and Asst. Bourse |
| Richard Conn | Asst. Technology |
| Douglas Easton | Asst. Floor Manager |
| Darrell Ertzberger | Judges and AAPE Coordinator |
| Henry Hahn | Society Coordinator |
| Vincent Knaus | Technology and Webmaster |
| Douglas K. Lehmann | Program and Advertising |
| Patricia A. Lehmann | Publicity and Youth |
| Richard Livingston | Asst. Society and Asst. Technology |
| Paul Magid | Exhibits and Legal |
| Neal Parr | Asst. Cachets |
| Charles J. Peterson | Literature |
| Norval Rasmussen | Graphics and Credentials |
| Howard H. Schloss | Government Liaison and Asst. Floor Mgr. |
| Donna Joy Sigler | Bourse and Security |
| Otto J. Thamasett | Cachets |
| John Warren | Awards and Asst. Exhibits |
| Diana M. Wolff | Information |
| Gerhard S. Wolff | Banqueting |

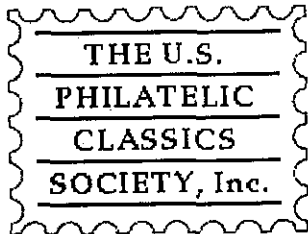
NAPEX 2003 Philatelic Jury

| | | |
|--------------------|------------------|------------|
| James P. Mazepa | Sarasota, FL | Chair |
| Thomas F. Allen | Cleveland, OH | Juror |
| R. Timothy Bartshe | Golden, CO | Juror |
| Gregory M. Frantz | Denver, CO | Juror |
| Paul J. Phillips | Knoxville, TN | Juror |
| Thomas Lera | Falls Church, VA | Apprentice |
| Thomas P. Myers | Lincoln, NE | Apprentice |

US Philatelic Classics Society

APS Unit 11

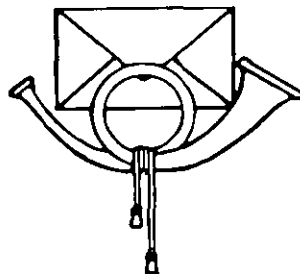
The United States Philatelic Classics Society (USPCS) is the successor of *The Three Cent 1851-57 Study Unit*. The USPCS scope has expanded since its 1948 founding and now includes postal issues and postal history from the Stampless era up to the Bureau Issues (1894). The USPCS publishes the quarterly journal, *The Chronicle of the U.S. Classic Postal Issues*, plus other award winning publications and exhibition photocopies. Other benefits include an awards program, a unique 5,600 stamp and cover reference collection, study groups, local chapters, regional meetings and the annual convention at a WSP show. At NAPEX '03 visit with them at Table A. Annual dues are \$22.50 (\$30 foreign), contact Rob Lund, 2913 Fulton Street, Everett, WA 98201-3733. You may also join online using their website at www.uspcs.org.



Postal History Society

APS Affiliate 44

The Postal History Society (PHS) was founded in 1951 but little activity took place until 1957 when the society was reorganized. The purpose of the PHS is to foster interest in writing about, studying, collecting, and exhibiting postal history. The society's *Postal History Journal* has been published continuously since 1957. This award winning journal comes out three times a year and now numbers 125 issues. Other society benefits include exhibition awards and an annual convention at a WSP show. At NAPEX '03 visit with them at Table F. Dues are \$30 a year (\$35-40 foreign), contact Kalman Illyefalvi, 8207 Daren Court, Pikesville, MD 21208.



Rossica Society of Russian Philately

APS Affiliate 171

The Rossica Society of Russian Philately was founded in 1929 and covers all aspects of Russian philately, from the pre-stamp days of Imperial Russia to current post-Soviet philately. The society publishes the award winning *Rossica Journal of Russian Philately* now only in English. It comes out twice a year serving nearly 400 active worldwide members. Other society benefits include a library, bookshop, auctions, four local chapters, exhibition awards, and a WSP annual convention. At NAPEX '03 visit with them at Table G. Dues are \$25 per year and membership applications are available from Gary A. Combs, 8241 Chalet Court, Millersville, MD 21108. You may also join online using their website at www.rossica.org. This website also includes many articles and a bulletin board.



Carriers and Locals Society

APS Affiliate 211

The Carriers and Locals society was organized in 1991 and is dedicated to the study of nineteenth century United States carriers, locals and express posts, as well as the forgeries, reprints, and fantasies created of them. The society publishes the *Penny Post* quarterly. Other benefits include auctions, literature, and an annual convention at a WSP show usually in conjunction with the USPCS. At NAPEX '03 visit with them at Table B. Annual dues are \$35 (\$37-45 foreign). An application can be obtained from Martin D. Richardson, PO Box 1574, Dayton OH 45401-1574. There is also an online application on their website at www.pennypost.org. This website also includes numerous images from collections and auction catalogs.

